



RIVER CREST

DESIGN BUILD, INC.

Remodeling Report

Quality Living by Design

www.rivercrest.com • (410) 626-1241

GIVING BACK TO THE COMMUNITY

The Annapolis Maritime Museum is a nonprofit organization dedicated to preserving the city's maritime heritage. In the fall of 2003, the museum's facility on Back Creek was devastated by Hurricane Isabel. The McNasby Oyster Company Building, the museum's main facility was particularly hard hit and the museum's docks were essentially destroyed. A smaller historic building on the property, The Barge House, was also damaged.

Despite this setback, a strong volunteer board of directors with wide local support, immediately began plans for rebuilding. In 2004, the museum won transfer of the Thomas Point Shoal Lighthouse to the community.

With many employees being long-time area residents, River Crest became interested in the museum's fate. Joe Duval, River Crest's president, had worked on the McNasby docks as a young carpenter when it was still operating as an oyster company. Last fall, the company participated as a corporate sponsor in a fundraising event for the museum aboard the *USS Constellation*.

With the museum's importance to both local and personal history, River Crest volunteered to go further. River Crest will restore the smaller Barge House and is currently working to obtain the necessary building permits. The museum plans to use The Barge House as a base for boat tours to the Thomas Point Lighthouse as repairs to the larger McNasby's building proceed. River Crest is excited and proud to make this contribution to the community and its rich history. ♦

INDOOR LIGHTING: Think Function, Then Fixture

When designing or remodeling living space, lighting is an important component. Proper lighting is essential so that you can see what you're doing, of course, but it's more than that. Lighting also helps to create an atmosphere and can even affect your mood. Understanding the basic principles of lighting design will help you to create a living space that is both functional and pleasing to the eye.

General living space—living rooms, great rooms, family rooms, and even kitchens—can be particularly tricky, because the lighting must support a variety of activities. When evaluating a room's lighting needs, whether for a new room in the design phase or a redesign of an existing room, it helps to keep the three types of lighting in mind: ambient, accent, and task.

■ **Ambient lighting** is general lighting. Ceiling fixtures and wall sconces are two common types of ambient lighting. Indirect lighting (such as a torchiere), which bounces light off the ceiling and walls, works particularly well for general lighting purposes. It helps to expand the space visually and creates a warm atmosphere. Indirect lighting is soft lighting and minimizes harsh shadows and the glare on television and computer screens. If you use ceiling fixtures to provide ambient light, installing dimmer switches will provide you with maximum flexibility.

■ **Accent lighting** illuminates points of interest in a room, such as artwork, display areas, and architectural details. In addition to individual light fixtures



This River Crest basement remodel features all three types of indoor lighting: *ambient* lighting in recessed ceiling fixtures and lamps; *accent* lighting in the glass cabinets and the tray ceiling; and *task* lighting above the wet bar. For more on this project, see page 3.



RIVER CREST
DESIGN BUILD, INC.

202 LEGION AVENUE, SUITE 4
ANNAPOLIS, MD 21401



410-626-1241

See more projects at:
www.rivercrest.com

OUR MISSION:

To provide high quality design and construction services to our customers with honesty, integrity and in a profitable and timely manner.



Established in 1986, River Crest Design Build, Inc. is an Annapolis-based company which prides itself on forming a relationship with its clients.



River Crest projects have been featured in the Home Section of *The Capital* and in *Woman's Day Kitchen & Bath*. The company has won numerous national awards, including *Qualified Remodeler Magazine's* "Top 500," Certified Pella Contractor—Silver Award for Excellence and a 2001 Chrysalis Award.

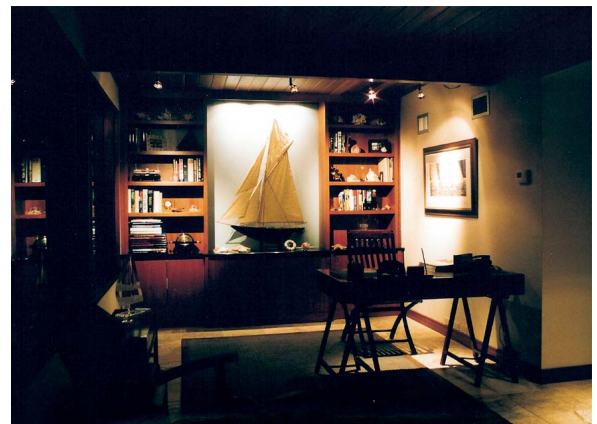


River Crest is a member of the National Association of Home Builders (NAHB), the National Association of the Remodeling Industry (NARI), The Remodelers Advantage, Inc. and the Better Business Bureau.

Indoor Lighting, cont'd.

(such as one focused directly on an oil painting), both track lighting and recessed lighting work well for accent purposes. Accent lighting can provide small area coverage or can accentuate larger areas, such as murals, hearths, and bookshelves.

■ *Task lighting* provides direct, shadowless light for specific tasks, such as reading, desk work, food preparation, and other area-specific activities. A variety of fixture types work well for task lighting—for example, a tabletop fixture on a writing desk, lights mounted under cabinets at a workbench, or a hanging pendant light over a pool table.



Accent lighting used in this River Crest project dramatically highlights the model sailboat and painting. Photo courtesy of Mike Noon, Palindrome Lighting

Lighting novices often make the mistake of choosing the fixture first, without thinking through exactly what they want to achieve. For instance, simply because they like the look of track lighting, many people mistakenly use it for general lighting purposes. Track lighting, which uses a surface-mounted channel to hold a series of individual lighting units, is directional in nature. This makes it suitable for task or accent applications, but not for ambient lighting.

Fixtures are purely cosmetic—their only function is to hold the lightbulb, or "lamp," as it's referred to in the industry. Understanding your purpose will guide you first to the proper lamp for the job, and then to a fixture that's compatible with both the lamp and the décor. Lamps are available today in a wide range of styles, wattages, and light quality. The most common are incandescent, cool and warm fluorescent, and halogen.

Whenever possible, decide on furniture placement before choosing lighting fixtures. Some types of fixtures, such as tabletop lamps, are easy to move as your needs change. But other lighting fixtures, such as built-in recessed lights, can't be moved around when you rearrange the furniture.

Most rooms require more than one type of lighting to meet all the room's lighting needs. Blending ambient, task, and accent lighting—also known as layering—creates a functional, aesthetically pleasing environment. For optimum lighting design, a collaborative approach often works best. Homeowner, architect, interior designer, contractor, and lighting designer will all have important perspectives to offer a project. ♦



Interesting? Yes. But is it right for the lighting task?